

Open APIs
for Open
Minds

Open session Smart Data Models 21-06-2021

Alberto Abella

Data modelling expert

FIWARE Foundation

alberto.abella@fiware.org



Agenda 2021-5-31

Every slot accounts for 5 minutes

Slot 1: Updates of the week (new services and new/updated data models).

Slot 2: Contributors. Contribution workflow.

Slot 3: JSON Schema Drafting (Srikrishnan V).

Slot 4: Free slot (write your name here) You can present or make questions. Include your slides (maximum 2) after this slide.

Slot 5: Free slot (write your name here) You can present or make questions. Include your slides (maximum 2) after this slide.

Slot 6: Free slot (write your name here) You can present or make questions. Include your slides (maximum 2) after this slide.

Slot 1: Updates of the week

New data models:

No new data models

Past Events:

Simhydro. [See slides](#)

Coming events:

See [calendar](#):

- **June 21th. I4trust training**

Slot 1: Updates of the week

Updated data models:

- Minor updates

New Subjects and Domains:

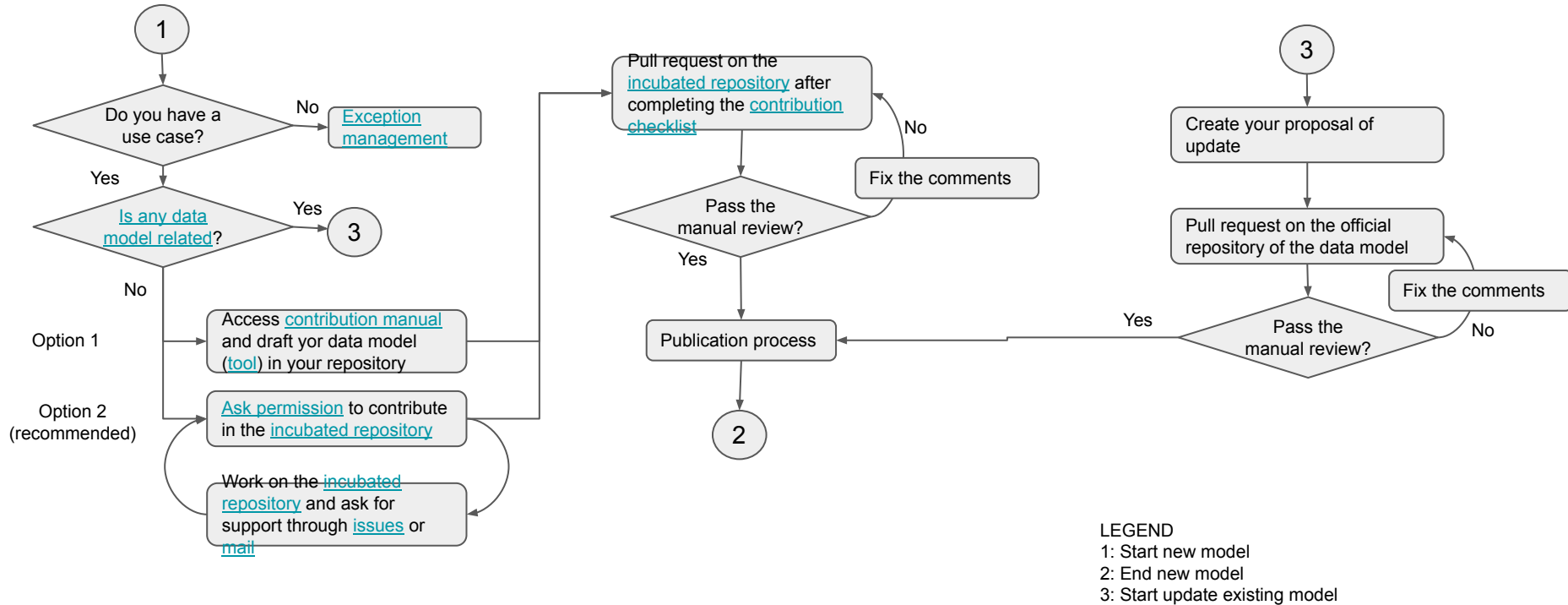
1. No new subjects or domains

Contribution workflow

Two main questions

1. How to simplify contribution
2. Should the scripts being released also. Which ones and why/what for?

Contribution workflow



What is required for a data model to be accepted

Schema	<ul style="list-style-type: none">• Name: schema.json. Location: /• File in json schema format containing the attributes of the data model, its data types and the description of every attribute. See next sections of this manual.• Template: schema.json
Examples	<ul style="list-style-type: none">• Names: (NGSiv2) example.json and example-normalized.json, (NGSI-LD) example.jsonld, example-normalized.jsonld. Location: /examples• 4 examples of this data model. 2 for NGSiv2 (key-values and normalized), named 2 for NGSI-LD (key-values and normalized)• Templates: example.json, example-normalized.json, example.jsonld, example-normalized.jsonld.
notes.yaml	<ul style="list-style-type: none">• Name: notes.yaml. Location: /• Customization messages for specification. Three zones, header, middle and footer. Possible empty.• Template: notes.yaml
ADOPTERS.yaml	<ul style="list-style-type: none">• Name: ADOPTERS.yaml. Location: /• Use cases of the data model. See the template. Possible empty (discouraged).• Template: ADOPTERS.yaml
CONTRIBUTORS .yaml	<ul style="list-style-type: none">• Name: CONTRIBUTORS.yaml. Location: Root of the subject. ../.• Authors of any of the data models. Possible not adding author. Mandatory sign of contribution agreement.• Template: CONTRIBUTORS.yaml

... and nothing else, sure. No README.md, no model.yaml, no swagger.yaml.

Slot 2. What scripts should be open and why?

We have 'many' scripts for making the Smart Data Models initiative automatic.

Some examples:

- Creation of the model.yaml for all data models
- Creation of the Specifications in different languages
- Creation of the DTDL schema example
- Creation of NGS-LD examples based on the schema
- Checking of the proper documentation of a data model
- (other you can ask for it)

Which one should be open and what will be the 'use'?

Slot 3. JSON Schema Drafting

- **Questions**
 - **What is the new procedure for drafting a schema?**
 - **Procedure for creating a location attribute.**
 - **Regarding the maximum value and minimum value for the numerical attributes**
 - **EnvAQM Example schema**
 - **BikeDockingStation datamodel schema.**

Action points

Study automation of examples conversion

Review of key values examples

How to warn about new data models coming?

Release the script for the creation of documentation